

# MOBILE I.B.C. TANKS

## Porter Tank Series CAN/CGSB-43.146-2002 Standard

Designed for the Transportation of Petroleum Products

For Construction and Forest Industries

### Standard Design Features:

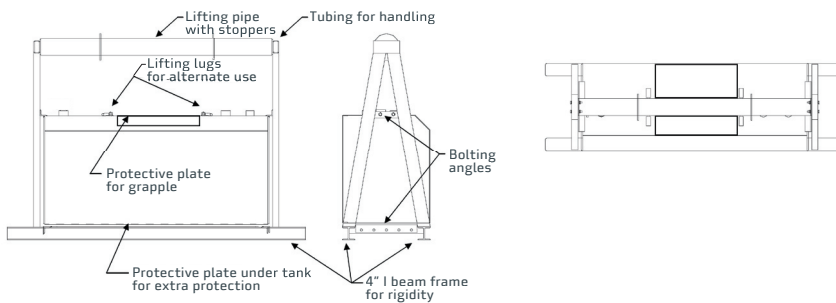
- Tanks designed and built to meet **CAN/CGSB-43.146-2002 standards Transport Canada Permit No. 4-473**
- Flanged heads construction and bottom angles for greater rigidity
- Tank built with A-569, A-1011 or 44W, 3/16" thick steel
- Painted with epoxy primer and polyurethane top coat
- Includes three of 2" N.P.T. connections
- Two lifting lugs included on every tank
- Labeled as per specifications and regulations
- Strong subframe and lifting bracket
- Bottom skid plate
- Top doubler plate for additional puncture protection



Inquire about other available options

**"This high-quality product undergoes a series of tests and is built to last. Proud and dedicated workmanship goes into the fabrication of every tank."**

### Specifications:



Capacity		Dimensions (in.)			Shell Thickness	Approximate Weight
Liters	Imp. Gal.	Height	Length*	width		
682	147	60.25	96	25	3/16"	1 115 lbs
1 136	246	60.25	96	28	3/16"	1 344 lbs

\*Including skid beams.

Inquire for details

### Distributed by: